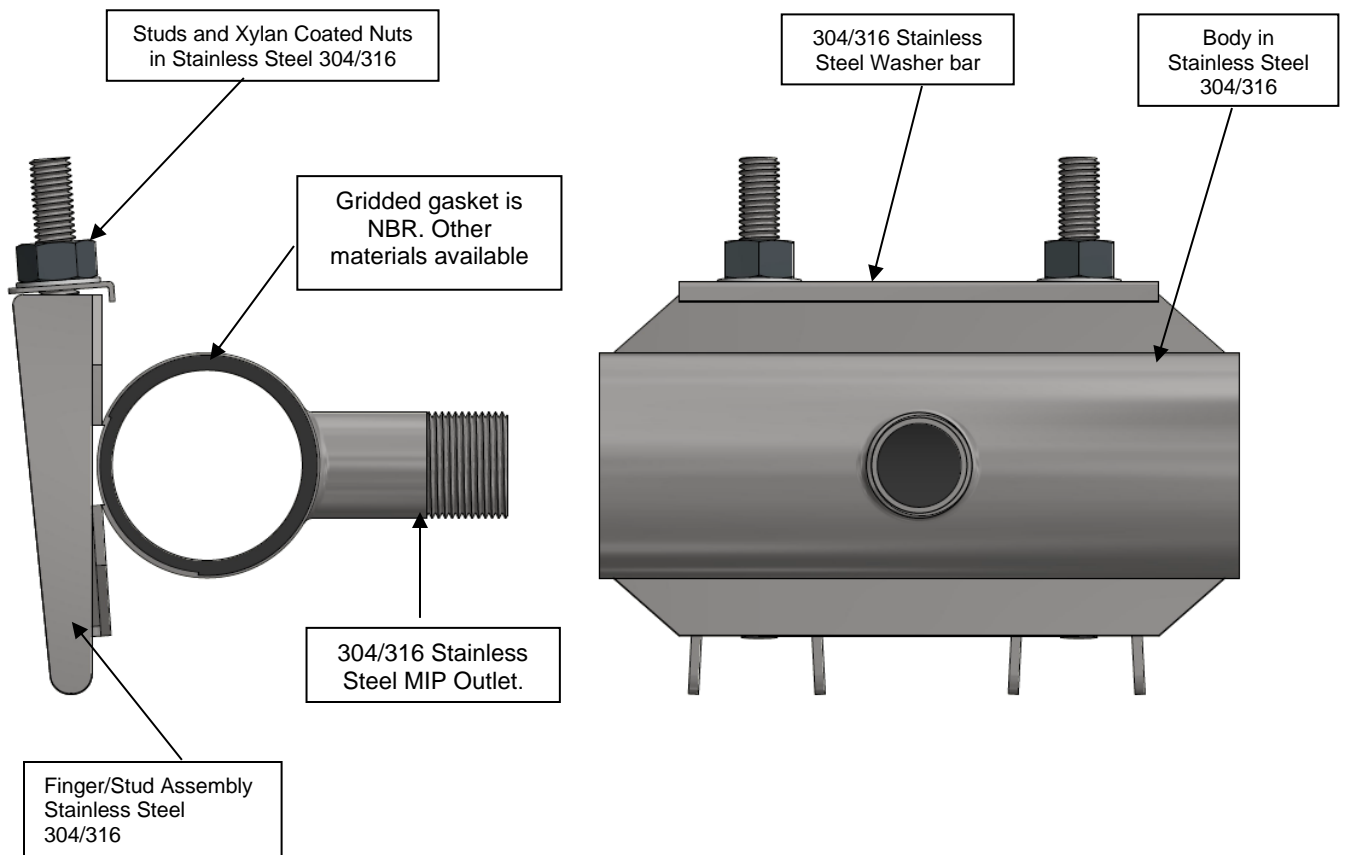


Features and Benefits

1. Available in 3/4" to 8" diameters and size on size from 3/4" x 3/4" to 4.00" x 4.00
2. Suitable for water and sewer applications up to 150 psi.
3. The complete tapping saddle is constructed of 304 or 316 Stainless Steel and all welds shall be passivated so to return the welded stainless steel to its original corrosion resistant state.
4. Exact fit full circle design.
5. Outlets, MIP threading is protected during manufacture against dents, nicks, or damage.
6. 360° complete full circle gridded gasket provides protection against leaks.
7. NSF 61 and NSF/ANSI 372 Certification.



FOR ALL SIZES	
WORKING PRESSURE	TESTING PRESSURE
150 PSI	225 PSI

Scope

The intent of this specification is to receive a PowerStop saddle from 3/4” up to 8” for copper and steel OD pipes. The PowerStop furnished shall be equivalent to Model 3425 PowerStop saddle as manufactured by PowerSeal Pipeline Products Corporation.

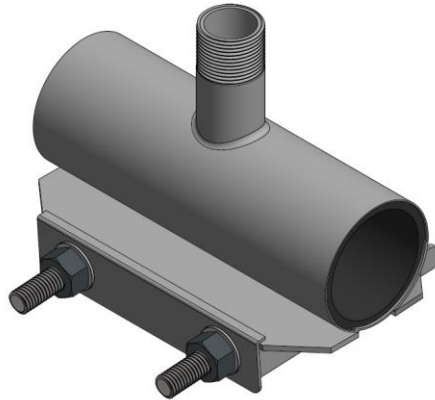
Design and Material Specification

- The tapping saddle shall meet or exceed all material specifications as listed below:
 1. The tapping saddle shall have a complete circle gasket permanently attached to the sleeve at the factory.
 2. **3/16” thick Nitrile (Buna-N, NBR) gridded multi O-ring sealing ribs** from 100% new rubber to ensure performance under varying pressures with superior storage characteristics. Suitable for oils, acids, alkalis, most Hydrocarbon Fluids (aliphatic), potable water and many chemicals, within a temperature range of **-40° to +248° F**. SBR may be substituted.
 3. Finger/Stud sub-assembly shall be structurally welded GMAW/FCAW as one separate unit and GTAW (TIG) welded to the body panel.
 4. The armor plates shall be bonded to the gasket.
 5. There shall be no paper or plastic adhesive labels attached to the tapping saddle, any information appearing on the sleeve shall be stenciled.

Material Specifications		
Part Name	Material	Mat. specs
MIP Outlet	Stainless Steel type 304/316	ASTM A240
Panel	Stainless Steel type 304/316	ASTM A240
Finger/Stud	Stainless Steel type 304/316	ASTM A240
Washer Bar	Stainless Steel type 304/316	ASTM A240
Gasket	NBR/SBR/EPDM/VITON	ASTM D2000
Nuts	Stainless Steel type 304/316	ASTM A194



Model 3425 PowerStop



Nominal Pipe Size		OD		Studs Size	Panel width
In	mm	Inches	mm		
3/4	20	0.88	22	1/2" X 6 1/2"	8" wide for 3/4" to 2" outlets
		1.05	1		
1	25	1.13	29		
		1.32	34		
1 1/4	32	1.38	35		
		1.66	42		
1 1/2	40	1.63	41		
		1.90	48		
2	50	2.13	54		
		2.38	60		
2 1/2	65	2.63	67		
		2.88	73		